



Sustainability Action Plan

Our Pledge to the AIA 2030 Commitment

Released 01.24.2025 | Version 1



Executive Summary

1. FIRM COMMITMENT + DESIGN APPROACH

As designers and members of the global community, we recognize the profound impact our work has on the environment. At CosciaMoos Architecture, we are committed to advancing sustainable design practices within our firm today, so that we foster a resilient and responsible future.

2. GOAL SETTING + REPORTING

By leveraging the online American Institute of Architects (AIA) 2030 Design Data Exchange, we are comprehensively evaluating and reporting all eligible projects, both past and present, regardless of scale. Through annual reporting, we can use the data to establish internal standards and set measurable goals aimed at achieving net-zero emissions across all our projects.

3. INTERNAL TRAINING + EDUCATION

We integrate sustainability education into our daily office operations, ensuring that our staff remains informed about industry best practices. This ongoing investment in professional development enables us to easily bring equitable and resilient design principles to our work.

4. ADVOCACY + OUTREACH

Our commitment extends outward through advocating for green design practices in our projects and inward through fostering a culture of social responsibility. By engaging clients early, we define project goals that unite exceptional performance with meaningful impact. To nurture values of environmental stewardship in ourselves we participate in community outreach and local volunteer initiatives.

5. OPERATION + OUTLOOK

Our outlook is centered on employee well-being and inclusivity. Leveraging our urban location, we utilize local green spaces and public transportation. Additionally, we prioritize sustainable practices through energy-efficient operations, waste reduction, and mindful procurement, minimizing our environmental impact both internally and in the broader community.

1. FIRM COMMITMENT + DESIGN APPROACH

As designers and members of the global community, we recognize the profound impact our work has on the environment. At CosciaMoos Architecture, we are committed to advancing sustainable design practices within our firm today, so that we foster a resilient and responsible future.

At CosciaMoos Architecture, our commitment to sustainability is a core value that drives our design philosophy and operational practices. We recognize that the built environment plays a critical role in shaping the future of our planet, and as such, we bear responsibility for the long-term environmental impact of our projects.

Our firm's pledge to the AIA 2030 Commitment reflects a deep dedication to reducing our carbon footprint and promoting sustainable practices in every aspect of our work. By joining this initiative, we have made a public commitment to align our design and construction methods to drastically reduce our emissions. This involves a continuous effort to improve our practices, embrace innovative technologies, and prioritize sustainability in every phase of a project, from conception through construction and beyond. In support of this commitment, we are focused on reducing our reliance on non-renewable energy sources and implementing strategies to minimize waste and optimize energy use in our designs.

Our approach includes rigorous project management to ensure efficient energy use, waste reduction, and a holistic view of environmental impact across all projects. We are also committed to continuous improvement, leveraging tools such as the Design Data Exchange and advanced 3D energy modeling software to predict energy savings and establish performance baselines. By systematically evaluating past and present projects, we will build a robust database to inform future design decisions, helping us set new benchmarks and explore cutting-edge sustainable systems at the earliest stages of design.

Since the USGBC's formation, building codes have continued to evolve with increasingly stringent minimum standards for energy efficiency in building design, largely through pressure from LEED participants demonstrating that higher standards can be achieved. We support this trend, and work with our clients to exceed current energy codes by at least 20%.



Watch Case Factory, Riverside NJ
Pursuing LEED Gold

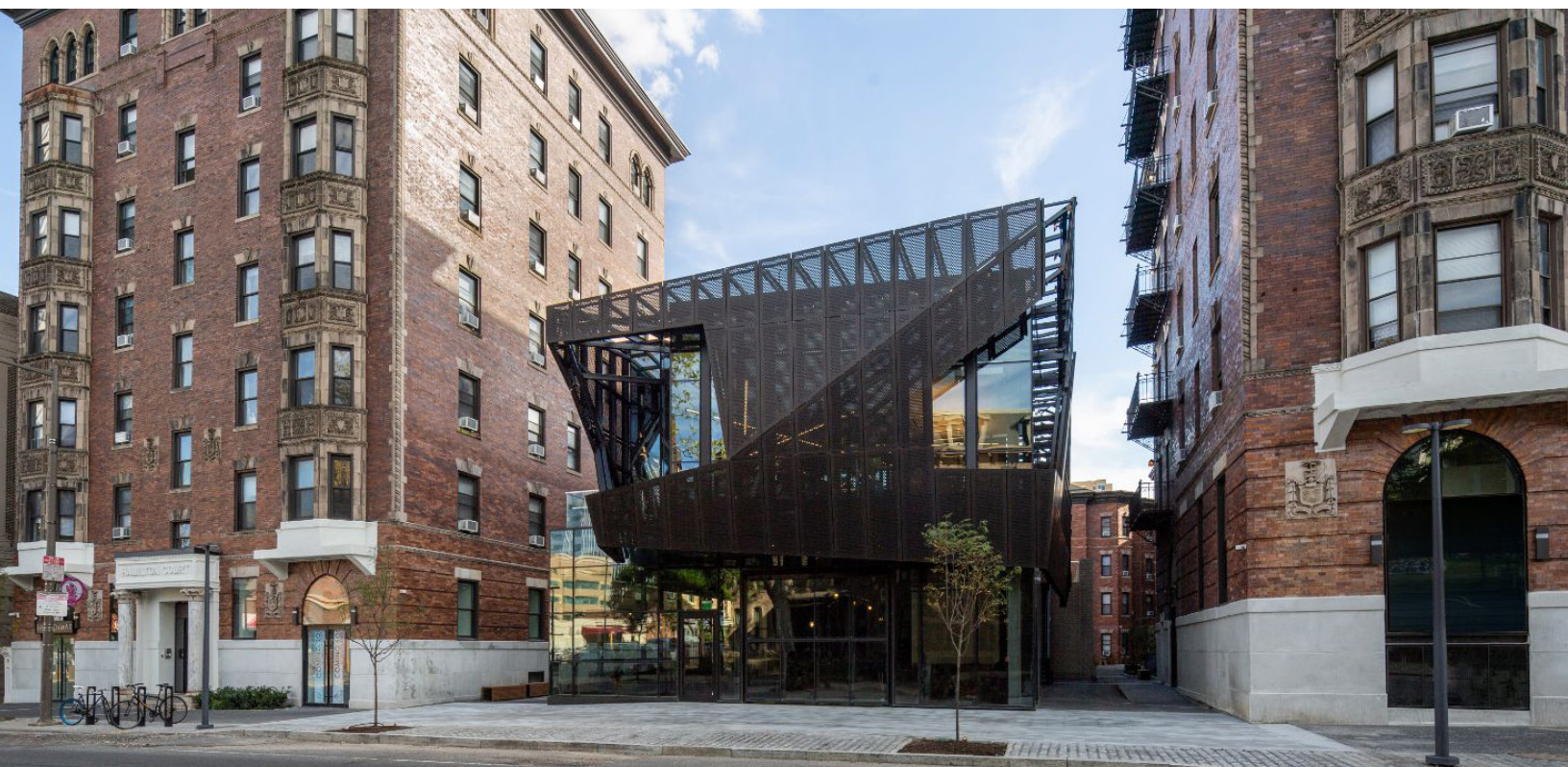
2. GOAL SETTING + REPORTING

By leveraging the online AIA 2030 Design Data Exchange, we are comprehensively evaluating and reporting all eligible projects, both past and present, regardless of scale. Through annual reporting, we can use the data to establish internal standards and set measurable goals aimed at achieving net-zero emissions across all our projects.

Our portfolio encompasses a diverse range of sectors, including healthcare, commercial office spaces, multifamily residential, higher education, and laboratory environments. Each project is approached with careful consideration of its unique requirements, whether it involves new construction or adaptive reuse. We place a strong emphasis on understanding the embodied carbon of materials, ensuring that every decision aligns with our sustainability goals.

In addition to considering building types and materials, we implement annual reporting to establish internal sustainability standards and track progress towards achieving net-zero emissions across all our projects. This reporting allows us to set clear, measurable goals for reducing our environmental impact and creating more sustainable built environments.

Once we have gathered and assessed the data from our projects, we use it to make informed, data-driven decisions that continuously improve our practice. By analyzing energy performance, material choices, and construction methods, we gain valuable insights that guide our approach to design, helping us refine our strategies for reducing carbon emissions and enhancing the sustainability of future projects. Through this process, we ensure that each project not only meets but exceeds our sustainability benchmarks, contributing to the broader goal of a net-zero built environment.



3. INTERNAL TRAINING + EDUCATION

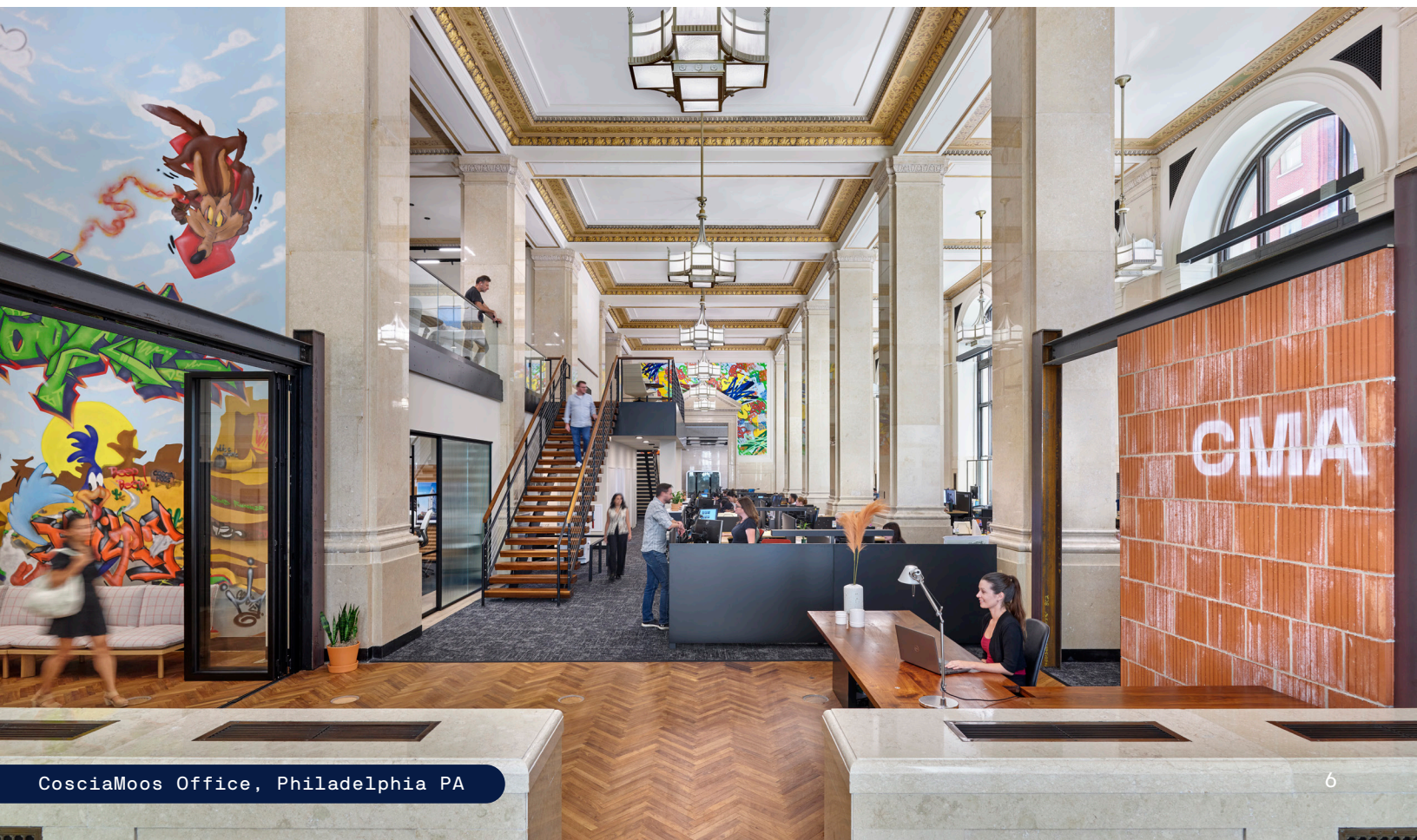
We integrate sustainability education into our daily office operations, ensuring that our staff remains informed about industry best practices. This ongoing investment in professional development enables us to easily bring equitable and resilient design principles to our work.

To ensure a consistent understanding of best practices in design and production, CosciaMoos hosts weekly internal seminars to keep our team updated on the latest tools, industry standards, and company-specific protocols. We integrate sustainable building practices and software into our office operations, fostering informed, responsible design across all projects.

We actively build partnerships with vendors and companies that prioritize sustainable design, engaging in project-specific product meetings and Continuing Education Units (CEUs), such as Lunch & Learn seminars. In addition, we participate and attend the GBCI Greenbuild conference every year. These sessions allow us to stay informed about new advancements in resilient design and sustainable products.

Furthermore, we organize regular office-wide site visits and tours to provide our team with a hands-on understanding of how our documentation impacts construction progress and outcomes. These field observations help identify both the successes and challenges of our sustainability efforts, enabling us to apply lessons learned to future projects.

We also support the individual growth of our team members by encouraging the pursuit of green credentials like LEED, providing resources for energy modeling software, and offering training on sustainability tracking tools. LEED-certified staff members serve as mentors, guiding projects to ensure the implementation of sustainable practices at every stage.



4. ADVOCACY + OUTREACH

Our commitment extends outward through advocating for green design practices in our projects and inward through fostering a culture of social responsibility. By engaging clients early, we define project goals that unite exceptional performance with meaningful impact. To nurture values of environmental stewardship in ourselves we participate in community outreach and local volunteer initiatives.

From the outset of the design process, we engage clients in discussions surrounding sustainability strategies and objectives. This collaborative approach includes incorporating key analyses, such as Life Cycle Assessments (LCAs), into the design process. LCAs provide a comprehensive evaluation of a building's environmental impact across its entire life cycle—beginning with material extraction and manufacturing, extending through its use, and concluding with end-of-life disposal or repurposing.

By keeping clients informed through these assessments, we help define sustainability goals that exceed regional and state requirements, positioning each project as a proactive contributor to environmental stewardship. This approach empowers clients, enabling them to achieve both immediate and long-term sustainability objectives.

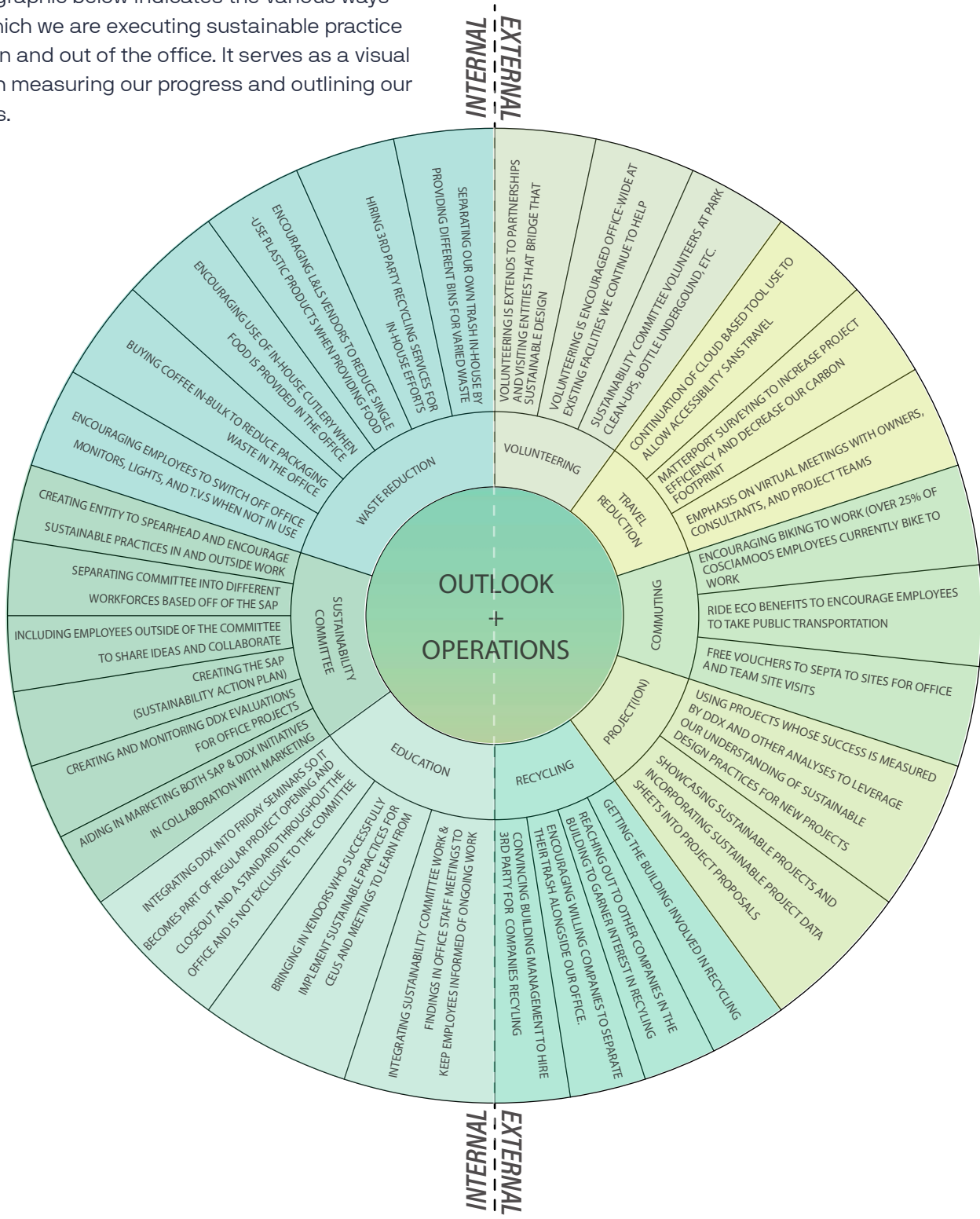
In addition to client education, our commitment to sustainability extends to our local community. Our office's Sustainability Committee plays a key role in driving outreach initiatives designed to foster environmental responsibility and community engagement. We organize volunteer-driven events, such as park clean-ups and local recycling projects, to promote environmental stewardship within our area. These efforts not only enhance the physical spaces we all share, but also encourage a sense of collective responsibility among our team members. By advocating for client-focused sustainability strategies and community outreach, we strive to create a lasting positive impact, both in the projects we deliver and in the communities we serve.



5. OPERATION + OUTLOOK

Our outlook is centered on employee well-being and inclusivity. Leveraging our urban location, we utilize local green spaces and public transportation. Additionally, we prioritize sustainable practices through energy-efficient operations, waste reduction, and mindful procurement, minimizing our environmental impact both internally and in the broader community.

The graphic below indicates the various ways in which we are executing sustainable practice within and out of the office. It serves as a visual aid in measuring our progress and outlining our goals.





1400 W 1300
WALNUT ST
ONE WAY

100 S 200
BROAD ST
AVENUE OF THE ARTS

ONE WAY

**WELLS
FARGO**
HISTORY MUSEUM

BROAD STREET

WALNUT STREET

1927

STEP UP YOUR JAWNS
store.philly.com
with the new
EAT BROWSE

Wells Fargo Building, Philadelphia, PA
CosciaMoos Architecture's Home

CosciaMoos

Architecture

Multi-Family ● Healthcare ● Science & Technology
Commercial ● Hospitality ● Interior Design



123 South Broad Street, Suite 220, South Lobby, Philadelphia, PA 19109

267.761.9416

info@cosciamoos.com

www.cosciamoos.com